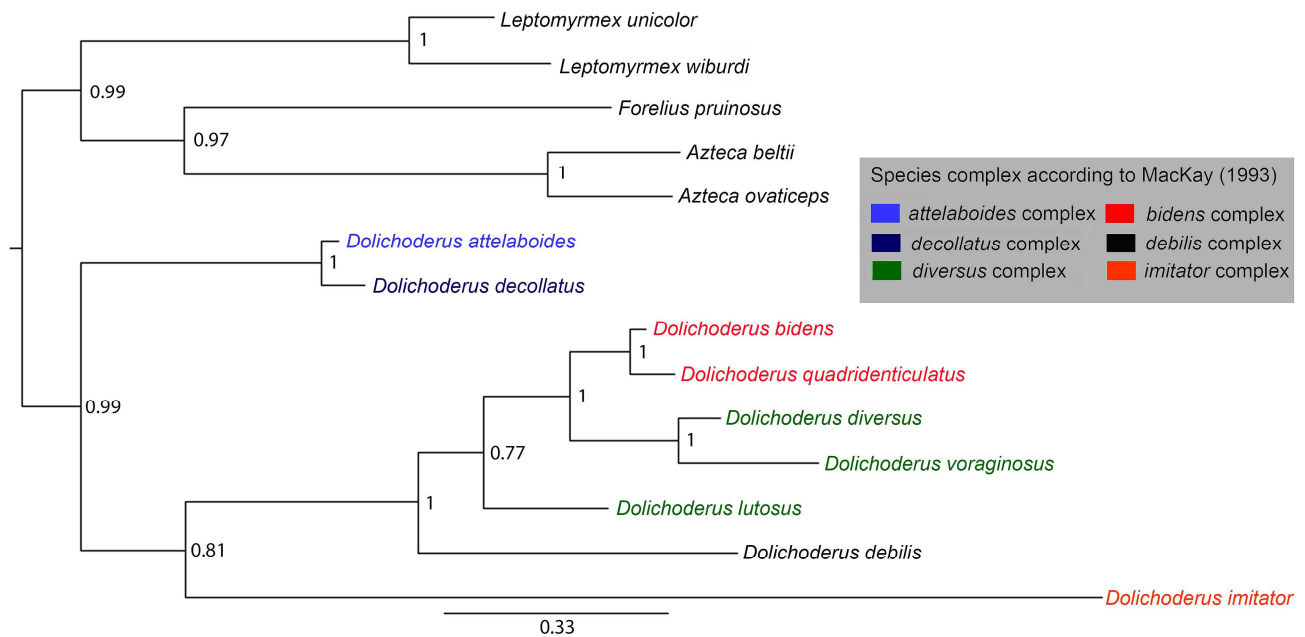
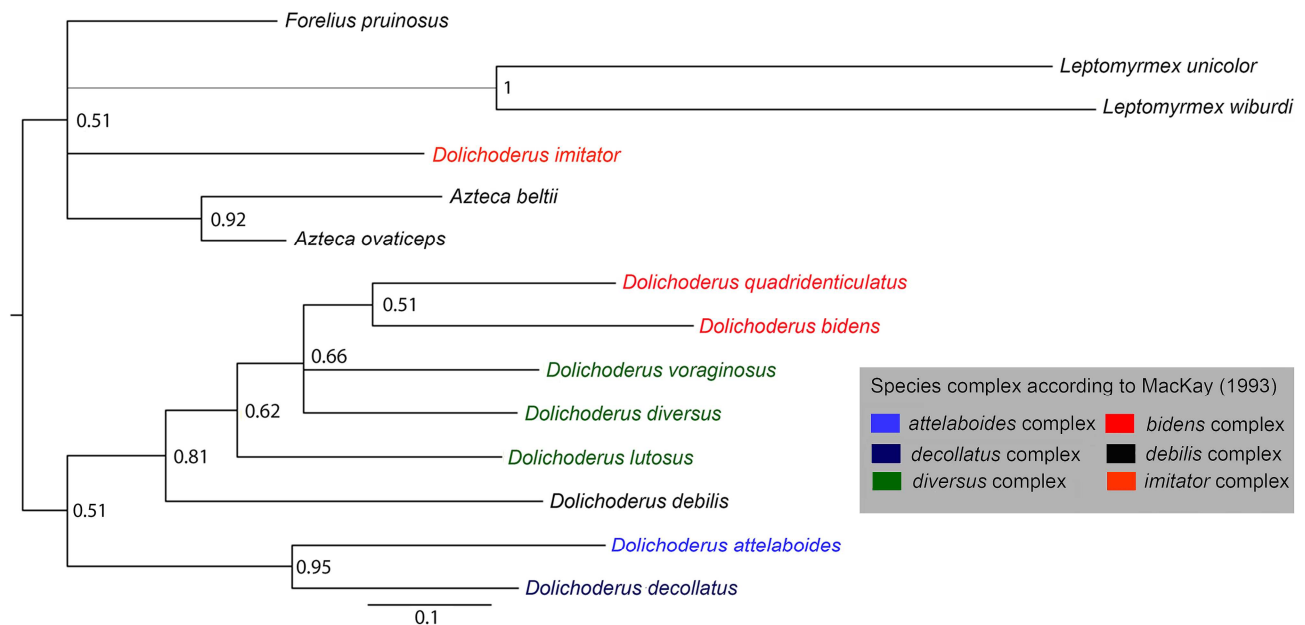


Digital supplementary material to

SANTOS, I.S., MARIANO, C.S.F., DELABIE, J.H.C., COSTA, M.A., CARVALHO, A.F. & SILVA, J.G. 2016: "Much more than a neck": karyotype differentiation between *Dolichoderus attelaboides* (FABRICIUS, 1775) and *Dolichoderus decollatus* F. SMITH, 1858 (Hymenoptera: Formicidae) and karyotypic diversity of five other Neotropical species of *Dolichoderus* LUND, 1831. – Myrmecological News 23: 61-69.



Appendix S1: Phylogram of *Dolichoderus* based on Bayesian analysis of partial sequences of the Cytochrome Oxidase I gene. Numbers in the nodes represent Bayesian posterior probabilities. DNA sequences for the genera *Azteca*, *Forelius*, and *Leptomyrmex* were obtained from GenBank.



Appendix S2: Phylogram of *Dolichoderus* based on Bayesian analysis of partial sequences of the Long-Wavelength Rhodopsin gene. Numbers in the nodes represent Bayesian posterior probabilities. DNA sequences for the genera *Azteca*, *Forelius*, and *Leptomyrmex* were obtained from GenBank.