

Digital supplementary material to

TRAGUST, S., TARTALLY, A., ESPADALER, X. & BILLEN, J. 2016: Histopathology of Laboulbeniales (Ascomycota: Laboulbeniales): ectoparasitic fungi on ants (Hymenoptera: Formicidae). – Myrmecological News 23: 81-89.

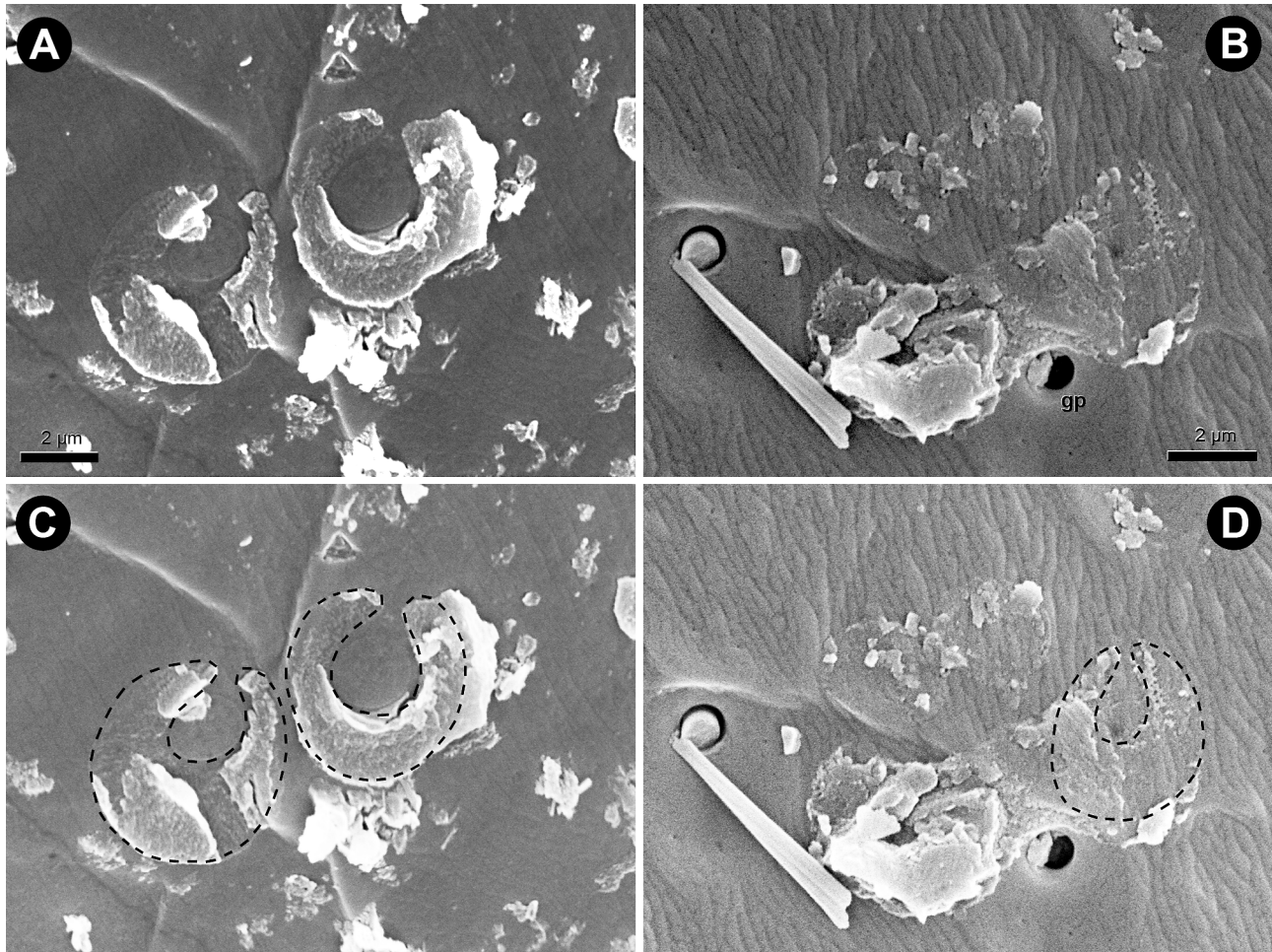


Fig. S1: Cuticle as seen under dislodged fungal thalli of *Laboulbenia formicarum* on the ant *Lasius neglectus* (A, C) and of *Rickia lenoirii* on the ant *Messor wasmanni* (B, D). The upper row (A, B) shows unaltered photographs, while the bottom row (C, D) shows the same, but brightened photographs with the horseshoe shaped imprints from the thallus foot structure outlined with a black dashed line for better visibility. Dislodged fungal thalli were never placed above particular features of the integument such as duct openings of gland cells (gp).