



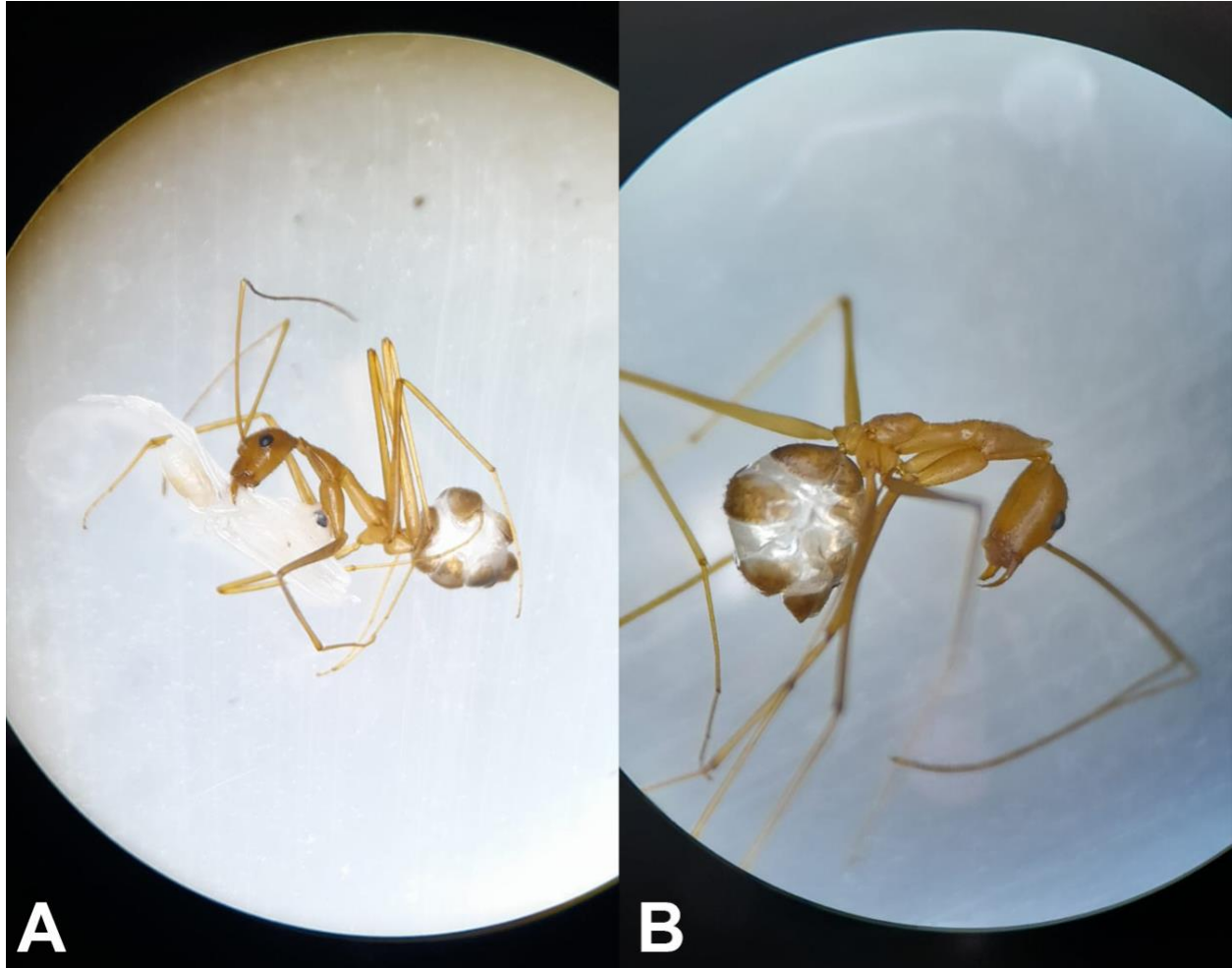
Digital supplementary material to

SAWH, I., BAE, E., CAMILO, L., LANAN, M., LUCKY, A., MORAIS MENEZES, H., FIORENTINO, G., SOSIAK, C., KHADEMPOUR, L. & BARDEN, P. 2023: The first fossil replete ant worker establishes living food storage in the Eocene. – Myrmecological News 33: 139-147.

The content of this digital supplementary material was subject to the same scientific editorial processing as the article it accompanies. However, the authors are responsible for copyediting and layout.

Supplemental Materials

Fig. S1. Replete workers of *Leptomyrmex relictus*. (A) Lateral view of *L. relictus* worker carrying nestmate pupa. (B) Posterolateral view of *L. relictus* worker.



Data S1. Replete character state codings for *Leptomyrmex* species. This supplementary material is available as separate file from the journal's webpages.

Video S1. Replete workers of *Leptomyrmex relictus*. Video evidencing mobile replete workers emerging from disturbed nest. Filming took place on the morning of August 20, 2020 (~9:00), at an external temperature of 29.3°C and 27.8°C inside the nest (nest humidity ranging from 30% to 60%). This supplementary material is available as separate file from the journal's webpages.

Video S2. Replete workers of *Leptomyrmex relictus*. Video evidencing mobile replete workers emerging from disturbed nest. Filming took place on the afternoon of August 20, 2020 (~14:00), external temperature of 34.5°C and internal temperature of 29.4° (nest humidity ranging from 30% to 60%). This supplementary material is available as separate file from the journal's webpages.